

**LCI**

SUBSTATION MONITOR LOCAL COMMUNICATION INTERFACE

*Substation Monitoring  
and Network Connectivity***Application Overview**

The LCI is a substation monitor that continuously monitors up to 32 **AC-PRO** and/or **ZERO-Hertz** trip units connected to its RS-485 port. Information from the trip units is displayed on the LCI's front panel.

**Features**

- ❑ 4-Line X 20-Character Display
- ❑ Rugged NEMA 4X Enclosure
- ❑ RS-485 Port
- ❑ Support up to 32 trip units simultaneously
- ❑ 10Base-T Ethernet Port
- ❑ Programmable IP Address
- ❑ WEB Enabled
- ❑ 2-year limited warranty

**Local Substation Metering**

Pressing the **SCAN** button on the front panel will cause the LCI to display the current from each trip unit sequentially according to each trip unit's COMM Address (1 thru 32).

**Easy Access to Information**

When the current of a particular trip unit of interest is being displayed, the **HOLD** button can be



pressed which will cause the LCI to continuously display the current from that trip unit only. Additional information from that trip unit can be displayed by pressing the **VOLTS**, **POWER**, **LAST TRIP**, **LOG**, or **SET POINTS** buttons.

**Built-In Ethernet Port**

The built-in ethernet port allows easy connection to a corporate intranet (LAN). Once connected to the LAN, all of the trip units connected to the LCI's RS-485 port will be addressable

across the LAN using standard MODBUS protocol. This allows easy integration to most graphical MMI software packages containing a MODBUS driver.

**Web Enabled**

Critical up-to-the-second data can be viewed on the corporate intranet by simply entering the LCI's unique IP Address into a web browser. This provides a snapshot of data to quickly identify Overload and Alarm conditions that may exist.

# LCI

SUBSTATION MONITOR LOCAL COMMUNICATION INTERFACE

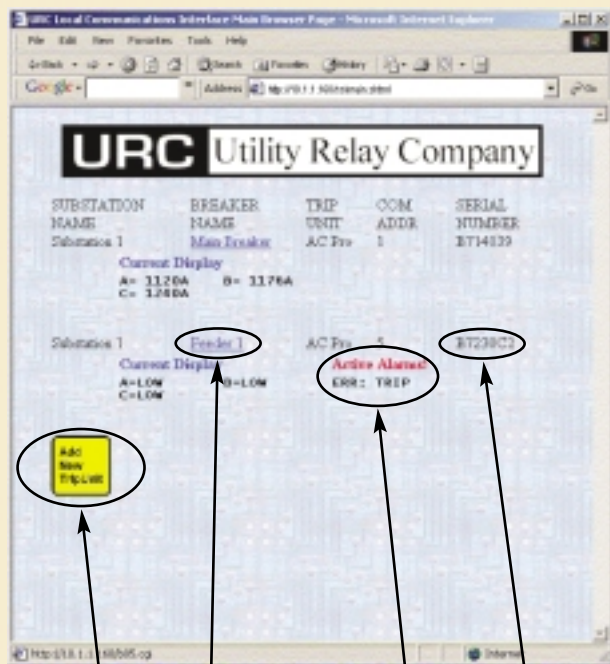
## Web Monitoring

Once connected to a corporate intranet, the LCI is accessible. An instant status check on your substation can be obtained by entering the LCI's unique IP Address in a web browser. The LCI's **Main Page** will appear and provide a "snapshot" of information. This information can be updated by pressing the "Refresh" button on the browser.

### Main Page Information Includes:

- Substation Name
- Individual Breaker Names, COM Addresses and Serial Numbers
- Current Display of all connected Trip Units
- Active Alarms
- Ability to Add new Trip Units to the System

## Main Page



Opens *Edit Trip Unit* page to add new trip units.

Opens *Edit Trip Unit* page to edit current trip unit.

Displays active alarms

Trip Unit Serial number. This will display "Offline" if communications is lost.

## Edit Trip Unit Page

This page can be accessed in two ways: 1.) by clicking on the "Add New Trip Unit" button on the Main Page, or 2.) by clicking on a specific "Breaker Name"

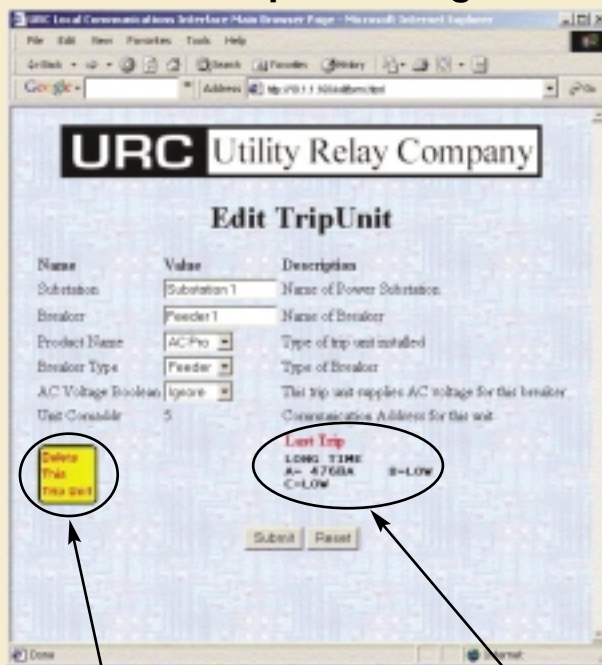
### Adding New Trip Units

Clicking on the "Add New Trip Unit" button on the Main Page will cause the Edit Trip Unit Page to appear. By default, the next available (unused) COM Address appears. The COM Address can be changed and the appropriate Breaker Name and Substation Name can be entered. This will cause the new trip unit's information to appear on the LCI's 4 X 20 character display

### Editing Existing Trip Units

Clicking on a specific "Breaker Name" on the Main Page will also cause the **Edit Trip Unit Page** to appear. Trip Unit information can now be edited, the trip unit can be deleted (data no longer available on the LCI's 4 X 20 character display), and any active alarms can be viewed.

## Edit Trip Unit Page



Removes Existing Trip Unit from LCI Display.

Detailed Display of Active Alarms.

Call Toll Free: 888.289.2864

For additional information visit our website: [www.utilityrelay.com](http://www.utilityrelay.com)

**URC** Utility Relay Company

16759 West Park Circle Drive • Chagrin Falls, Ohio 44023  
Phone: 440-708-1000 • Fax: 440-708-1177